



**GDO**  
GRID DEPLOYMENT OFFICE

# Addressing Transmission Siting and Permitting Challenges

---

**Gretchen Kershaw**  
*Senior Advisor for Transmission*

June 14, 2024  
New England Electricity Restructuring Roundtable

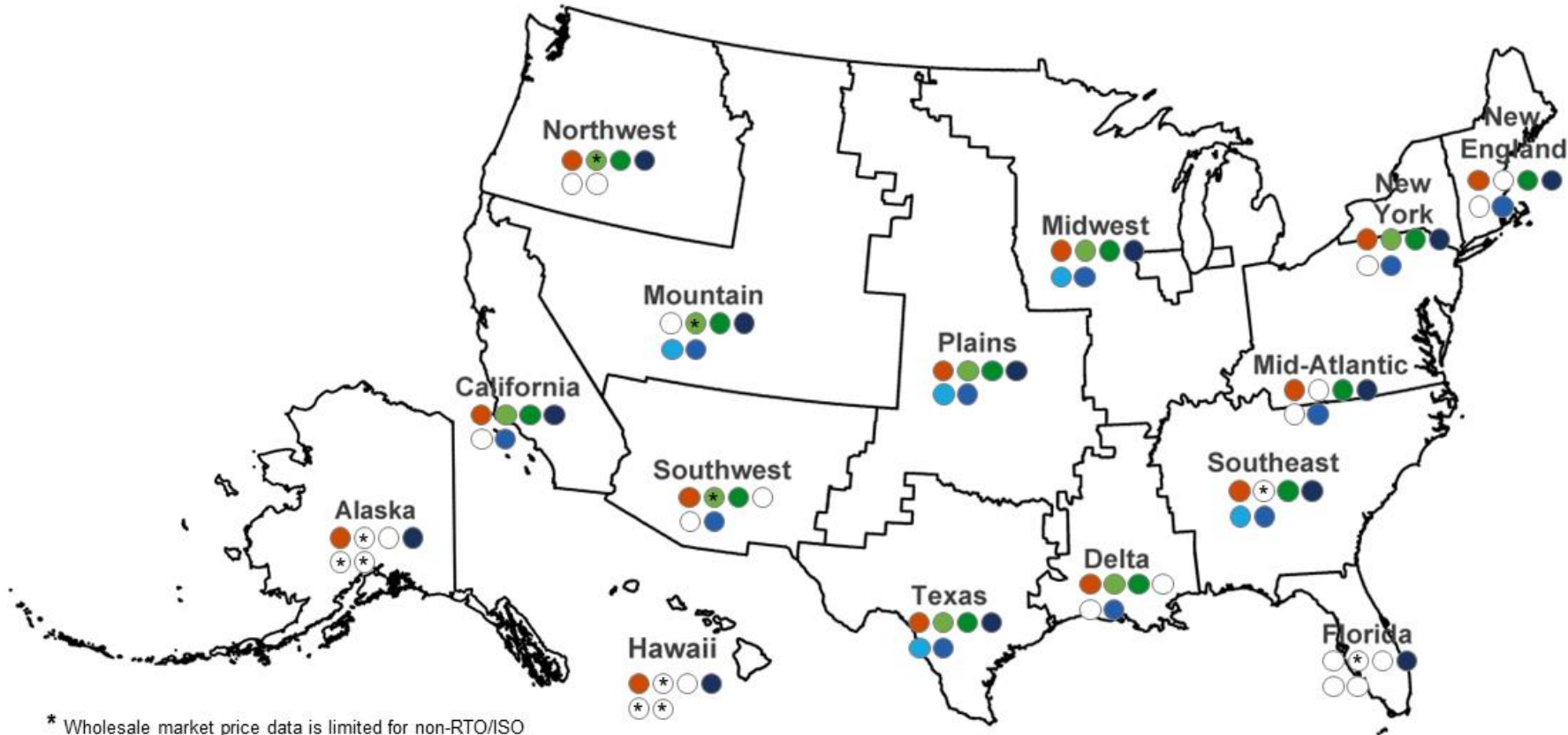


“To realize the full benefit of the nation’s goal of 100% clean electricity by 2035, we need to more than **double** our grid capacity.”

*Secretary Jennifer Granholm*



# Transmission is needed in every region



## Current or Anticipated Need:

Improve reliability and resilience	Alleviate congestion & unscheduled flows
Alleviate transfer capacity limits between neighbors	Deliver low-cost generation to high-priced demand

## Anticipated Need:

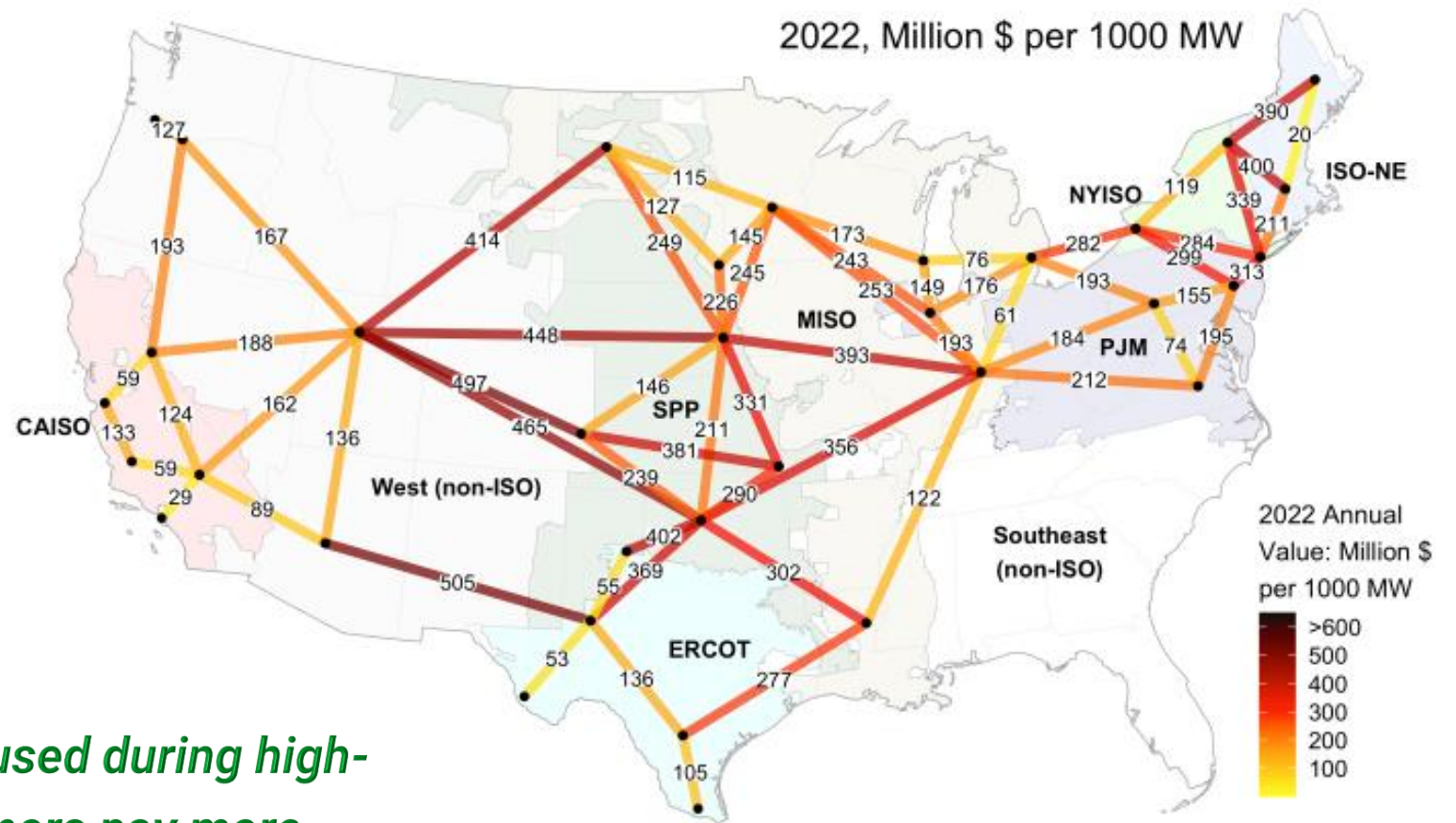
Meet future demand with within-region transmission	Meet future demand with interregional transfer capacity
--	---

\* Wholesale market price data is limited for non-RTO/ISO regions and capacity expansion modeling data is limited for Alaska and Hawaii. Absence of data does not necessarily indicate that there is no need for new transmission.



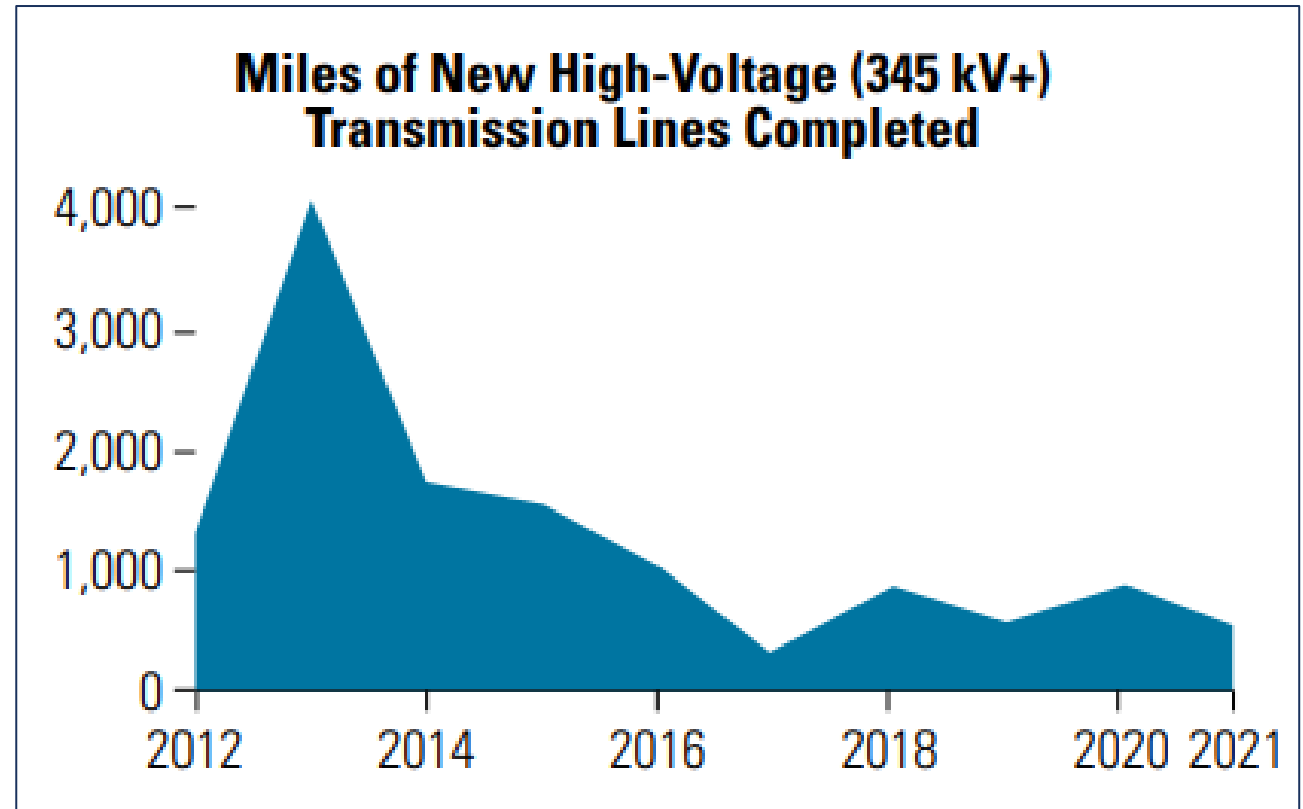
# Lack of transmission drives up consumer costs

*Lower-cost power that could be used during high-need times is trapped, so consumers pay more.*



# Urgency is needed, yet...

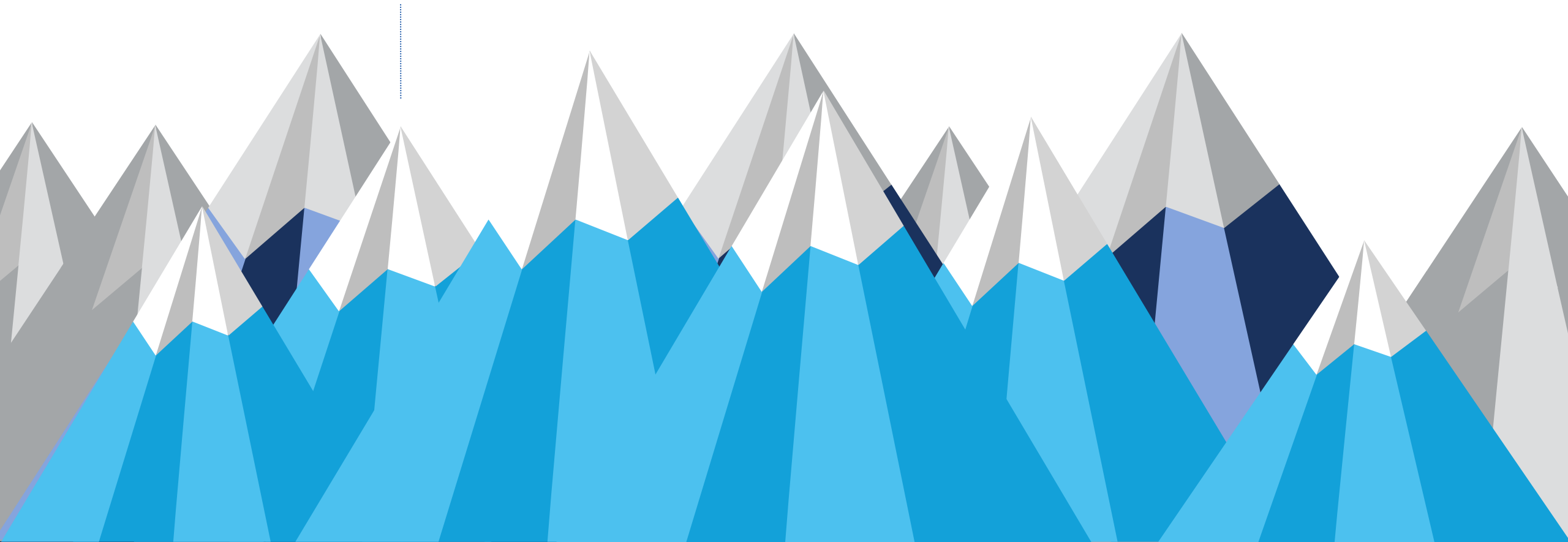
Large transmission lines regularly take **15 years** from idea to energization.



[Queued Up...But in Need of Transmission \(energy.gov\)](https://www.energy.gov/energy-infrastructure/energy-infrastructure-projects-queued-up-but-in-need-of-transmission)

# There are many barriers to transmission development.

Siting and Permitting



# GDO is addressing siting and permitting



**challenges with federal tools**

# What is a NIETC?

*National Interest Electric  
Transmission Corridor*

An area of the country where inadequate transmission harms consumers (currently or in the future) and that DOE has designated as a NIETC.





# What does NIETC have to do with siting and permitting?

## Federal Power Act 216(a)

National Transmission Needs Study &  
NIETC Designation

Department of Energy



## Federal Power Act 216(b)

FERC Siting & Permitting in NIETCs

Federal Energy Regulatory Commission  
\*Order No. 1977 (May 13, 2024)

After DOE designates a NIETC, **FERC has the authority** to issue permits within a NIETC in certain circumstances, such as **where states lack authority to site the project, have not acted on an application after more than one year, or have denied an application.**

Map is a rough approximation for illustrative purposes only



### Potential NIETCs

- New York-New England
- New York-Mid-Atlantic
- Mid-Atlantic-Canada
- Mid-Atlantic
- Midwest-Plains
- Northern Plains
- Delta-Plains
- Plains-Southwest
- Mountain-Plains-Southwest
- Mountain-Northwest

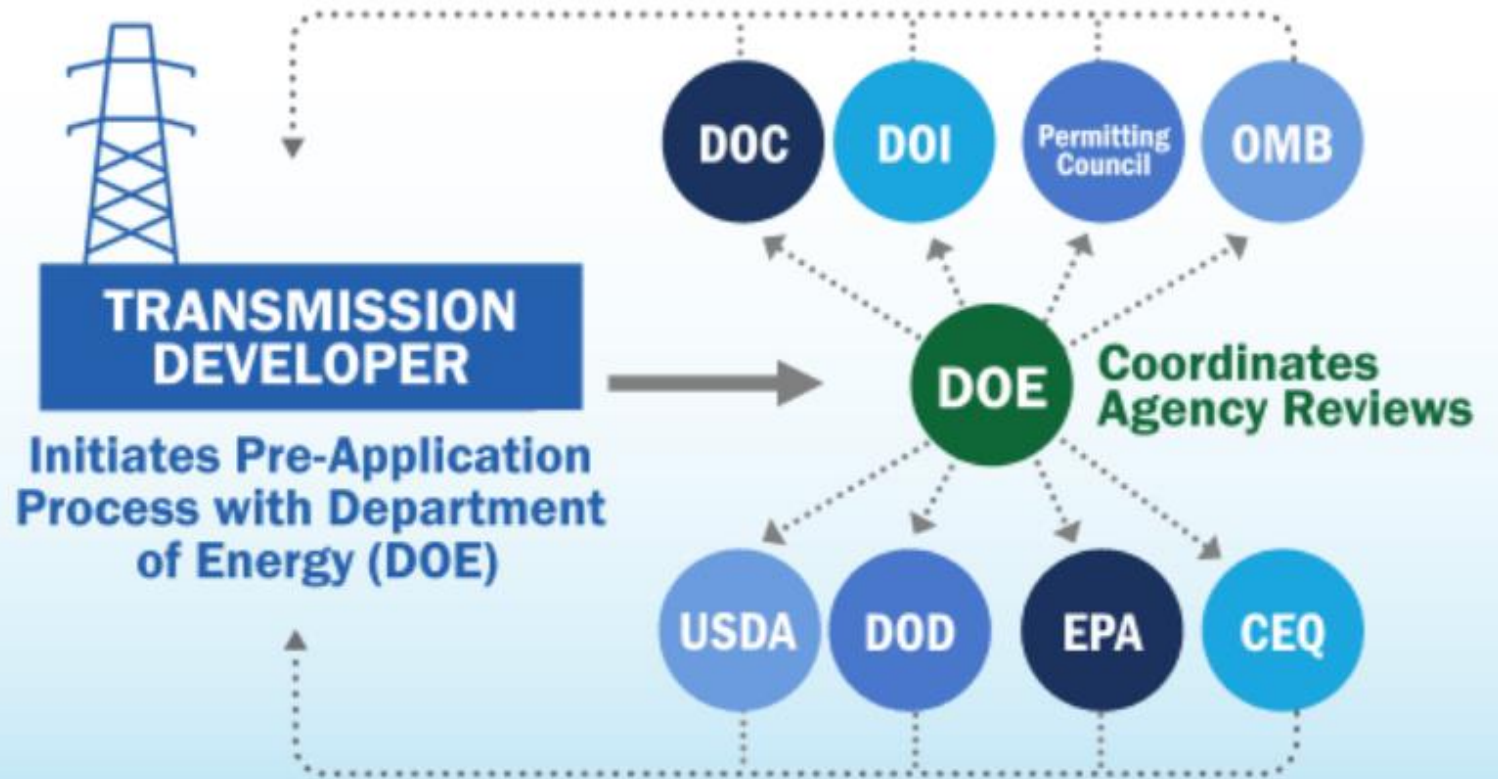
**Note:** The geographic boundaries of any potential NIETC that proceeds to Phase 3 may differ from those shown in the preliminary list.





**GDO**  
GRID DEPLOYMENT OFFICE

## Coordinated Interagency Authorizations and Permits (CITAP) Program



**2  
Years**



2 years

4 years  
(Average)

11 years



## Average time to site and permit a transmission project is almost cut in half

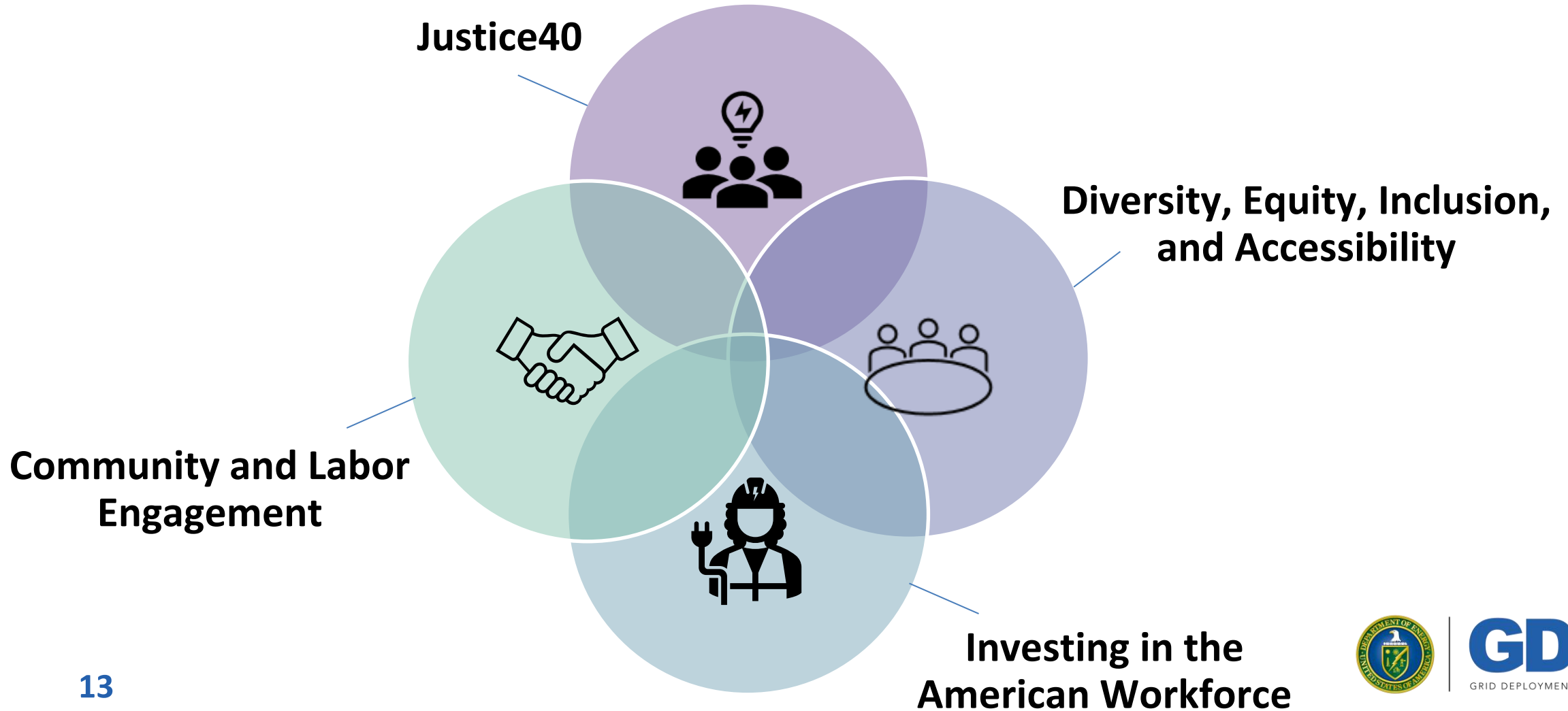
\*Source: Contextualizing electric transmission permitting:  
data from 2010 to 2020, Niskanen Center, 2024

# A new way to build transmission

Public approval follows from early and meaningful engagement, including consideration of *community needs and preferences*.

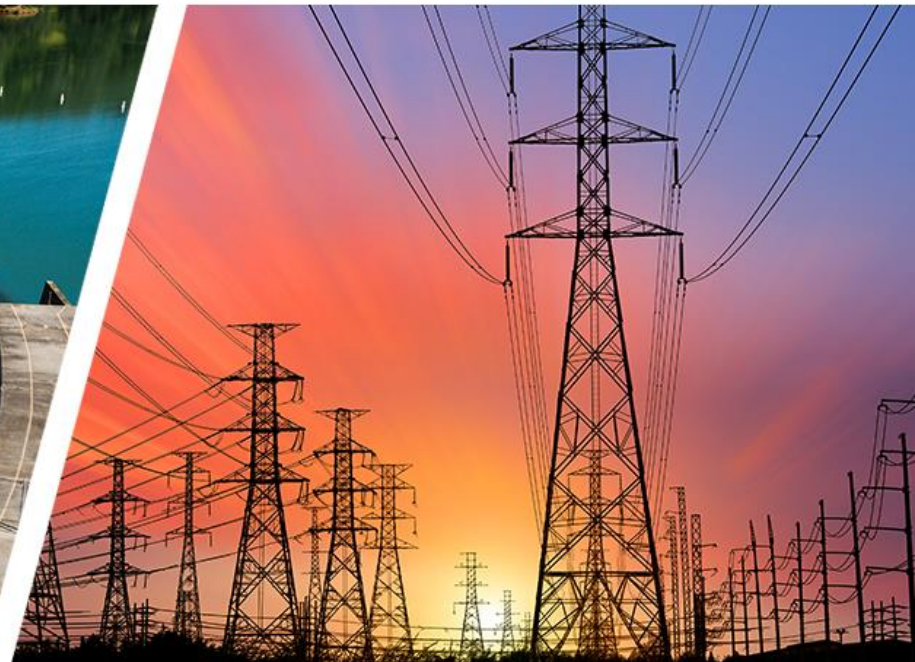


# GDO requires Community Benefits Plans



# Thank You

<https://www.energy.gov/gdo/grid-deployment-office>  
[Gretchen.Kershaw@hq.doe.gov](mailto:Gretchen.Kershaw@hq.doe.gov)





# Appendix

Map is a rough approximation for illustrative purposes only



## Geography:

- Approximately one mile wide, 60 miles long
- Includes portions of New York and Massachusetts
- Includes sections of existing state highway and high-voltage transmission rights-of-way
- Interregional corridor between the New York Independent System Operator (NYISO) and ISO New England (ISO-NE) footprints

## Transmission Need/Adverse Effects on Consumers:

- Maintain and improve reliability and resilience
- Alleviate congestion and reduce consumer costs
- Meet future generation and demand growth
- Increase clean energy integration







### Geography:

- Approximately four miles wide, 12 miles long
- Multiple potential interconnection points between New Jersey and New York City with potential to facilitate onshore transmission upgrades needed for integration of offshore wind generation in the Atlantic Ocean
- Interregional corridor between the New York Independent System Operator (NYISO) and PJM Interconnection footprints

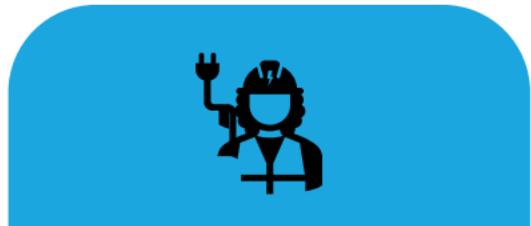
### Transmission Need/Adverse Effects on Consumers:

- Maintain and improve reliability and resilience
- Alleviate congestion and reduce consumer costs
- Meet future generation and demand growth



# Transmission Siting and Economic Development (TSED)

**\$760 million competitive grant program**  
to strengthen and accelerate state and local siting and  
permitting processes + support economic development for  
communities impacted by interstate and offshore transmission



# Offshore Wind Transmission Planning

